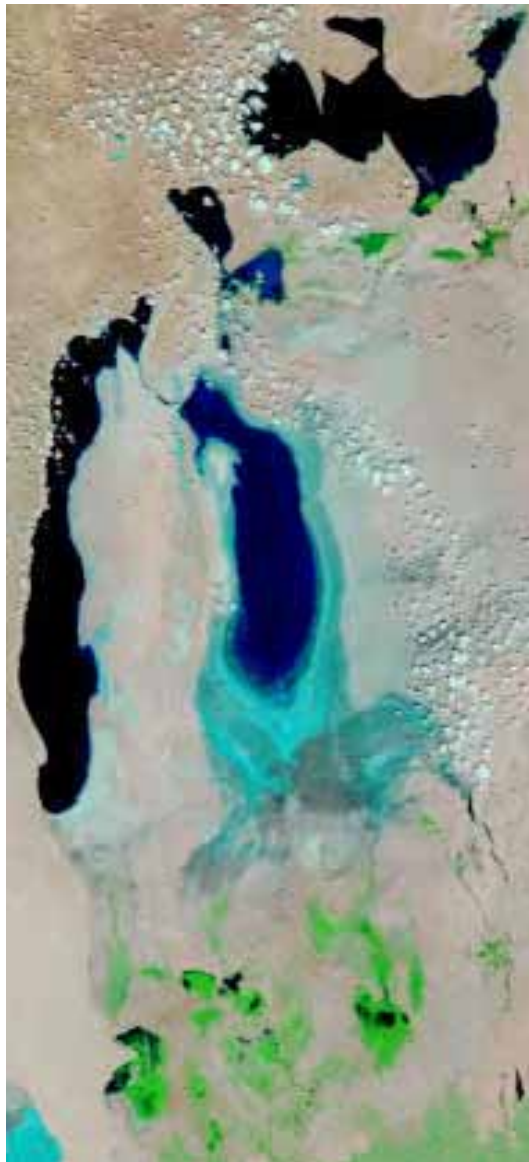


## **Monitoring dynamics of the water surface and wetlands area in the Southern Priaralie**

The open water surface and wetlands areas in the Southern Priaralie in July 2011 were determined by means of satellite images in the SIC ICWC (Fig. 1, Table 1, 2).

Wetlands with open water surface as determined on the satellite images are presented in Table 1. For example, former Adjibay gulf and the Adjibay wetland 2 etc. have no open water surface at this time because it depends on a lay of land, vegetation period and inflow to the Southern Priaralie.

Information about wetlands areas in the Southern Priaralie on July 2011 is in Table 2.



**Fig. 1. Southern Priaralie and Big Aral Sea - July 2011**

**Table 1****Comparison of open water areas, ha (March - July, 2011)**

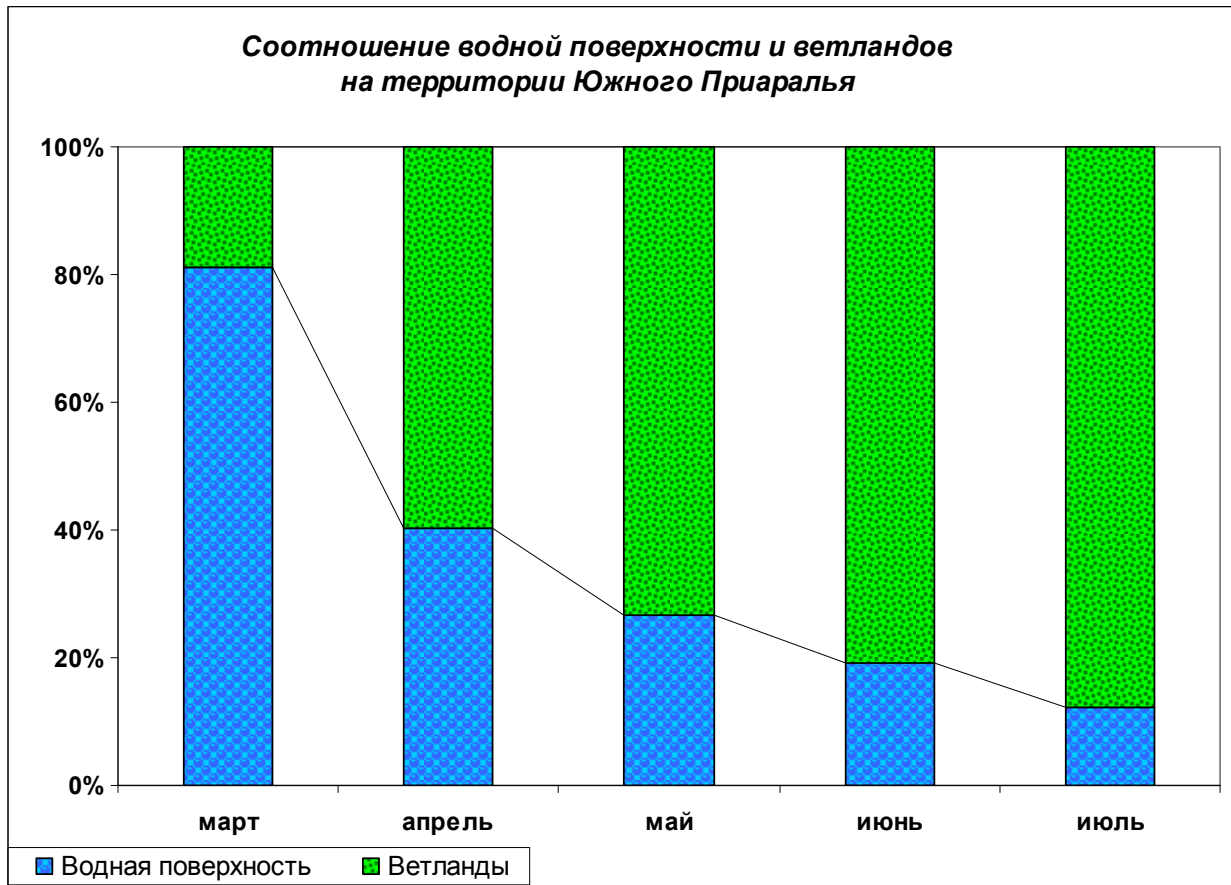
<b>Water body</b>	<b>March 2011</b>	<b>April 2011</b>	<b>May 2011</b>	<b>June 2011</b>	<b>July 2011</b>
Sudochie	37092,19	35913,96	33648,61	24485,28	11069,20
Mejdurechenskoe	9129,81	9639,56	6782,32	4432,05	1810,49
Rybachie	3794,98	5952,92	5147,21	4849,01	4506,62
Muinakskoe	5182,66	5184,01	4272,57	3509,57	1944,59
Djyltyrbas bounded by dam	13821,67	13976,22	10008,75	8317,50	6975,49
Djyltyrbas (with the former right and left channels)	34609,06	29308,85	14233,13	11588,28	7965,55
Dumalak	1506,72	1579,32	578,25	1152,46	361,41
Makpalkol	811,85	2533,15	1723,48	1871,28	1679,98
Mashan-Karadjar	5269,31	6244,58	4472,06	2725,90	1541,69
Wetland to the south from Muinak	2065,57	1562,82	853,12	-	-
Wetlands along the bed of the Kazakhdarya river	2976,06	4885,01	3139,67	1720,04	1486,70
Zakirkol lake	546,38	1010,07	353,99	357,78	-
<b>Total</b>	<b>102984,59</b>	<b>103814,3</b>	<b>75204,41</b>	<b>56691,65</b>	<b>39341,72</b>

Table 2

## Comparison of wetland areas, ha (March - July, 2011)

Water body	wetlands March	wetlands April	wetlands May	Wetlands June	Wetlands July
Sudochie	-	29707,42	31547,52	33782,09	43742,16
Mejdurechenskoe	-	1845,53	19181,39	18061,27	23174,17
Rybachie	-	2163,22	3931,89	4247,80	4529,71
Muinakskoe	-	7328,11	7830,41	9129,10	9793,37
Djyltyrbas bounded by dam	-	18898,65	27340,65	33854,90	33797,10
Djyltyrbas (with the former right and left channels)	-	46525,38	62930,40	84745,11	102958,17
Former Adjibay gulf	12299,19	18773,25	19852,74	20320,06	20716,32
Dumalak	2673,17	3403,11	10456,37	11247,56	14812,37
Adjibay 2*)	-	2954,82	10785,62	11020,14	9825,73
Makpalkol	375,91	415,89	9357,21	7548,23	7829,15
Mashan-Karadjar	1873,21	4838,41	8596,91	9753,42	12585,21
Wetland to the south from Muinak	-	6620,41	7216,25	7574,51	7783,69
Wetland to the north-west from Muinak	3284,16	3372,18	3723,05	4815,21	5407,45
Wetlands along the bed of the Kazakhdarya river	2784,36	5483,46	9634,70	14805,13	17289,13
Zakirkol lake	734,35	1236,08	2177,82	2345,17	3134,87
<b>Total</b>	<b>24024,35</b>	<b>153565,92</b>	<b>207222,28</b>	<b>239394,8</b>	<b>283581,5</b>

Comparison of data of March (beginning of vegetation period in the Southern Priaralie) - July 2011 shows that a maximal water surface area of lakes was on April 2011, and a maximal wetlands area was on July. Dynamics of water surface area and wetlands area in the Southern Priaralie is shown in Fig.2.



**Fig. 2 Comparison between water surface area and wetlands area in the Southern Priaralie**

The water surface area is decreased by 64.5 thousand ha from April to July 2011 and the wetlands area is increased by 130 thousand ha for the same period.