

Hungarian Participation in Transboundary Water Management

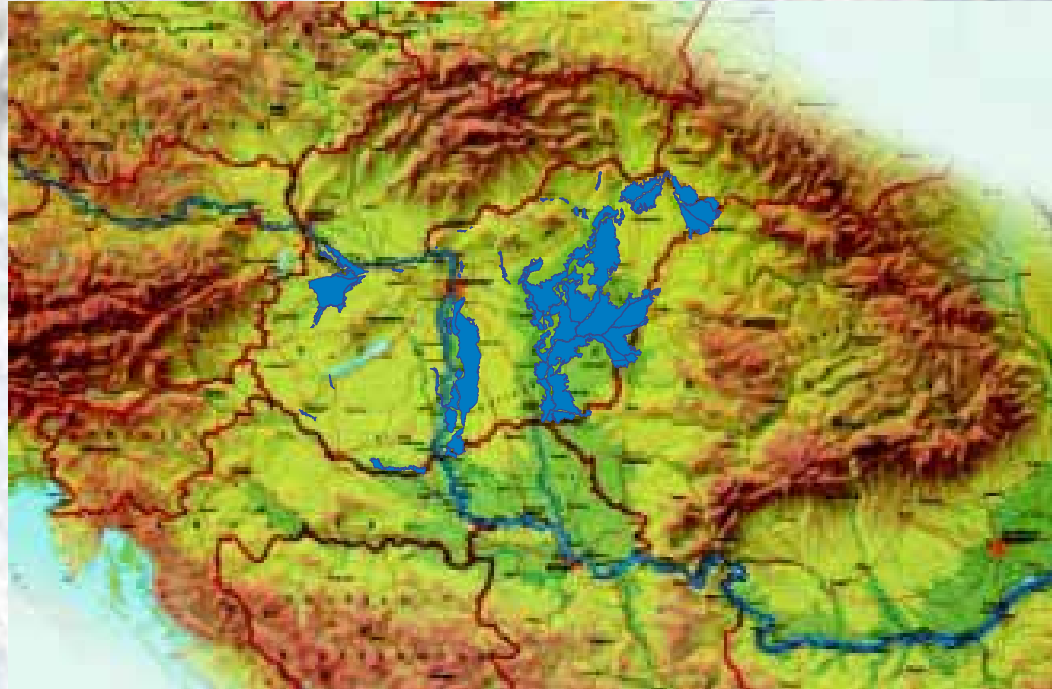
Kálmán Papp international co-ordinator

Central Directorate for Water and Environment in Hungary



Tashkent 12-13 May 2011

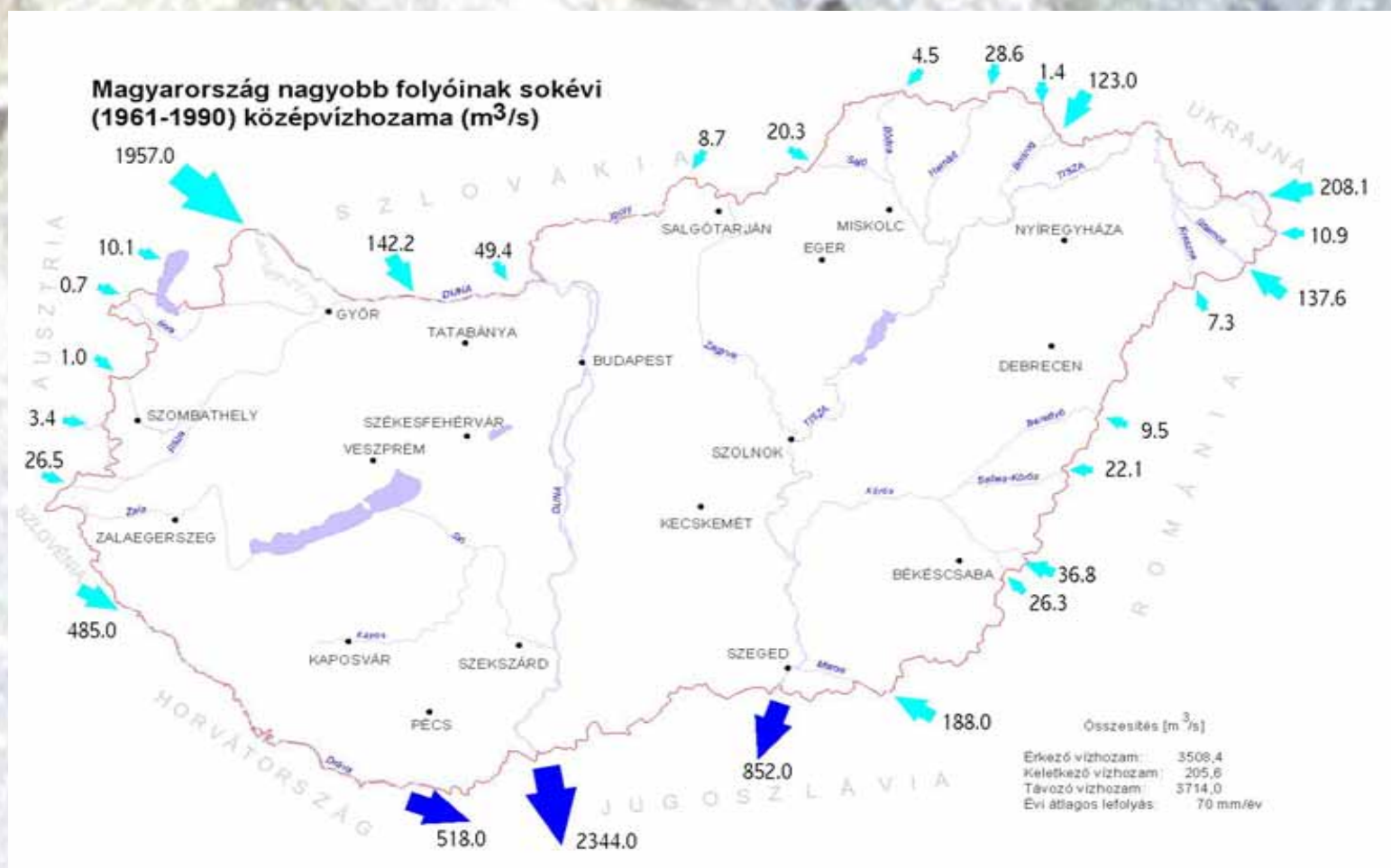
Hungary is situated inside the drainage basin of the river Danube, in the lowest part of the Carpathian Basin



7 neighbouring countries

Flood plains cover close to one-quarter of the country's territory, affecting 2,5 million inhabitants in 700 settlements.

Normal mean flow in the major Hungarian rivers (m³/s)



96 % of the surface water resources originate abroad



**Water management in Hungary is traditional.
Article XVII. of the Act of the year 1807 already dealt with
the water regulating boards.**

The first Water Act came into force in 1885.

Danube river basin

EU objectives: sustainable use of water



ICPDR aims:
coordinating the
common objectives of
the Danube basin

National aims:

- Considering the special needs and circumstances of flood control
- Introduction of the open planning process in water management



The start of transboundary co-operation after the World War I

- **Commission de Regime des Eaux du Danube (CRED)**
 - Hungarian-Austrian Water Regime Agrrement (1923)
 - Hungarian-Romanian Water Regime Agreement (1924)
 - Hungarian-Czechoslovakian Water Regime Agreement (1928)
- **Transcarpathian Region (Czechoslovak-Hungarian-Romanian) Commission**

Bilateral agreements

- Hungary - Sovietunion (1949)
 - Hungary - Romania (1950,1986,2003)
 - Hungary – Chechoslovakia /Slovakia (1954,1976)
 - Hungary – Yugoslavia /Serbia (1955)
 - Hungary - Austria (1956)
-
- Hungary - Ukraine (1993,1997)
 - Hungary - Slovenia (1994)
 - Hungary - Croatia (1994)

Important tasks of water commissions

- Hydrographic measurements, river regulation
- Flood- and inland water protection
- Maintenance of dykes and hydrotechnical constructions
- Development and technical plans, WFD tasks
- Water resources management
- Water quality measurements and evaluation

The structure of the transboundary water commissions

By catchment principle:

- Tisza Subcommittee

By technical or administrative principle:

- Water Management Subcommittee
- Hydrometeorological Subcommittee
- Financing Subcommittee

Latest developments in the bilateral co-operation

- **Referencies relating to multilateral conventions**
- **Bilateral enforcement of multilateral goals**
- **Acception of arbitration**
- **Implementation of WFD, more adequate use of basin principle**
- **Participation in transboundary projects**

International Conventions

- Belgrade Convention on regime of the navigation on river Danube 1948.
- Bucharest Declaration 1985.
- Helsinki Convention on transboundary watercourses and international lakes 1992.
- Sofia Convention on protection and sustainable use of Danube river 1994.

Bilateral references on multilateral conventions

- HU-CRO 1994: Bucharest Declaration, Helsinki Convention
- HU-SLO 1994: Helsinki Convention, Sofia Convention
- HU-UKR 1997: Helsinki Convention, Sofia Convention
- HU-RO 2003: Helsinki Convention, Sofia Convention, EU WFD

Sofia Convention 1994

Entered in force: 1998

Contracting Parties:

14 Country delegations and EU

ICPDR Secretariat in Vienna

7 Expert Groups, Task Forces

International Projects

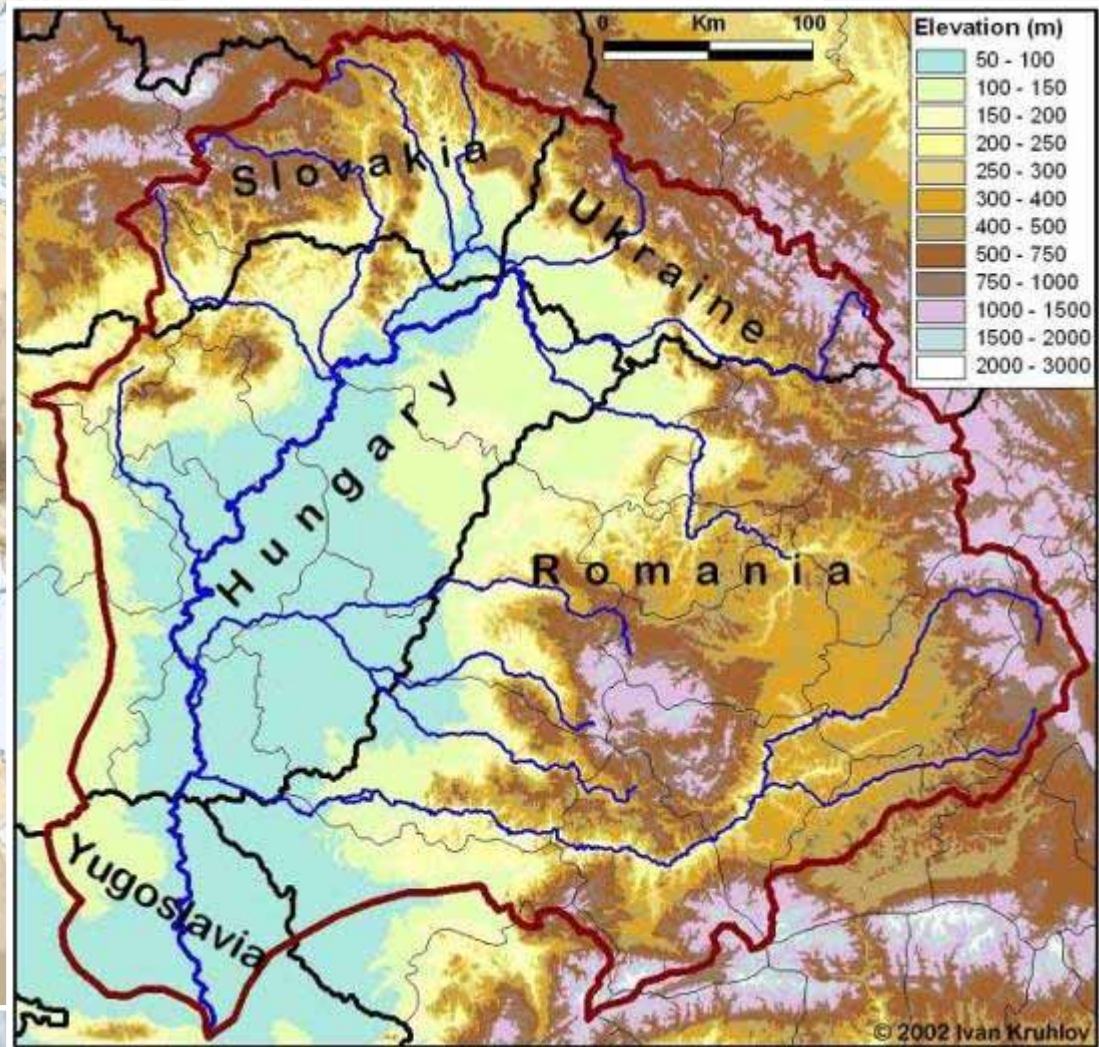
Multilateral Cooperation in the ICPDR – Sofia Convention 1994

- Leading the Flood Protection Working Group
- Participation in the River Basin Management Group
- Ad hoc Tisza Group (sustainable management plan for the Tisza river)
- Participation in the preparation of Roof Report
- Co-ordination of the implementation of WFD

Tisza River Basin

Longitude: 962km

Catchment area: 157 186 km²



Multilateral Cooperation on Tisza River

**Tisza Water Forum
Ministerial MoU under ICPDR
UNDP/GEF project
Initiative for a new Tisza Basin
Organisation**

Ministerial MoU

Vienna, 13-14 December 2004

- **Towards a RBMP for the Tisza River supporting sustainable development of the region**
- **Formulation of Ad hoc Tisza Group**
- **Harmonisation with the UNDP/GEF Tisza projects and the Tisza Water Forum**

New challenges

- **New sort of pollutions (cyanid and heavy metal pollutions, communal wastes)**
- **More often and flash floods
(Effects of Climate Change)**
- **Deforestation**
- **Loss of biological diversity**

Transboundary projects

Hungary-Slovakia: Hernád-Hornad (WFD)

Hungary-Romania: Körösök-Crisuri (WFD)

Danube Flood Risk

CEframe

Flood Wise

Conclusions

The bilateral and multilateral tasks are interconnected

To solve the new challenges of water management is only possible by a more effective transboundary cooperation and relying on agreed river basin management plans.

An aerial photograph of a wide river with a light-colored, sandy or silty bed. The water is a pale blue-grey color. A white rectangular box with a thin black border is centered over the river, containing the text "Thank you for your kind attention" in a bold, dark blue font.

**Thank you
for your kind attention**